

A ML-based climatology of dissolved organic carbon

Thelma Panaïotis¹, Jamie Wilson² & BB Cael¹

¹ National Oceanography Centre, Southampton, UK

² University of Liverpool, Liverpool, UK

thelma.panaïotis@noc.ac.uk

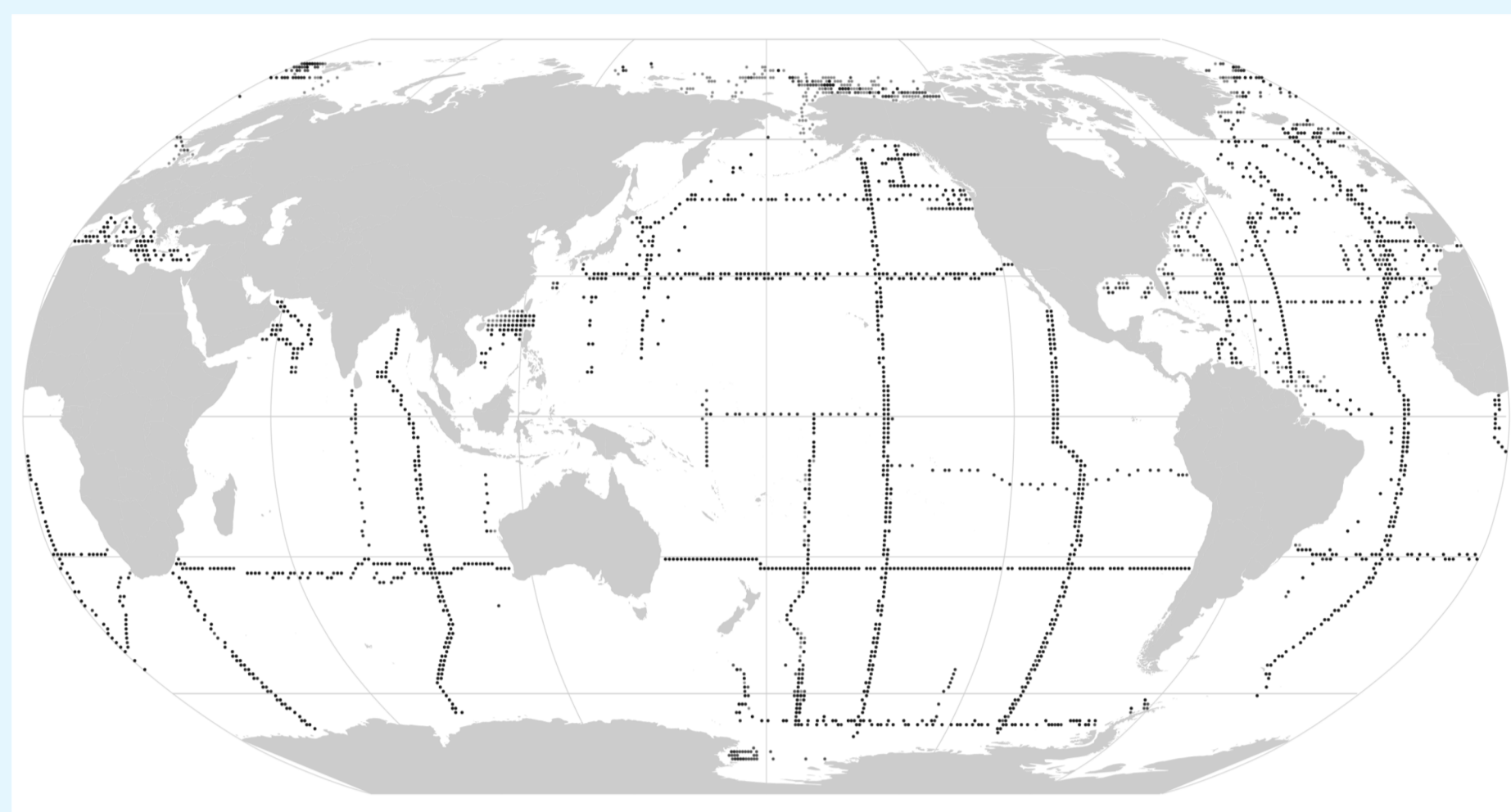


Context

Dissolved organic carbon = large and reservoir of carbon, but poorly constrained in the biogeochemical carbon cycle. Numerous DOC observations but **lack of available climatologies**. Can we use ML to build one?

Methods

DOC observations¹
(several thousands)



Cut in 4 layers: surface, epi., meso. and bathy.
Cut in 4 seasons for surface layer

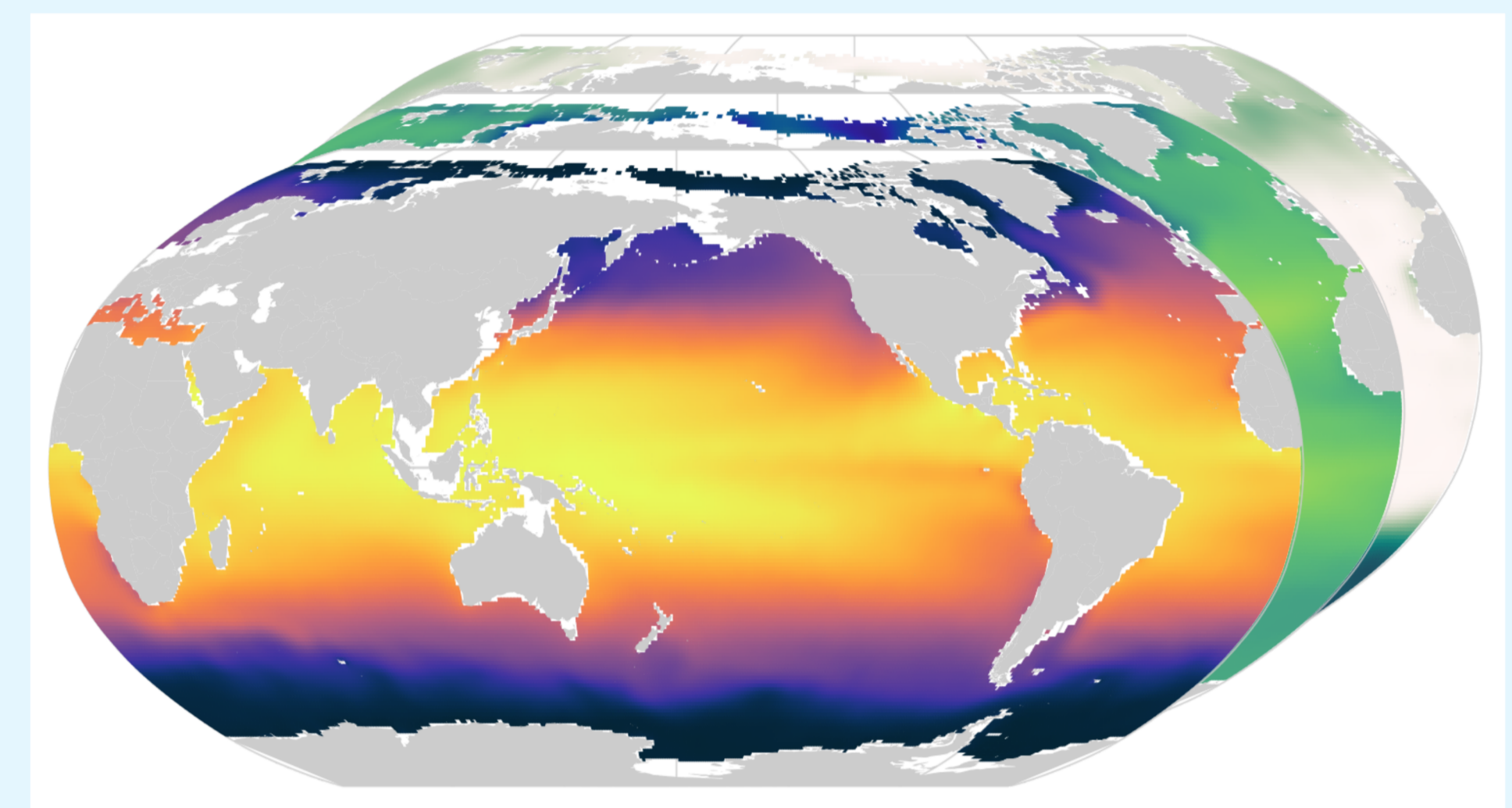
Boosted regression trees



10-fold nested CV

- stratified & spatial splits
- model fine-tuning
- robust performance estimate
- prediction uncertainty

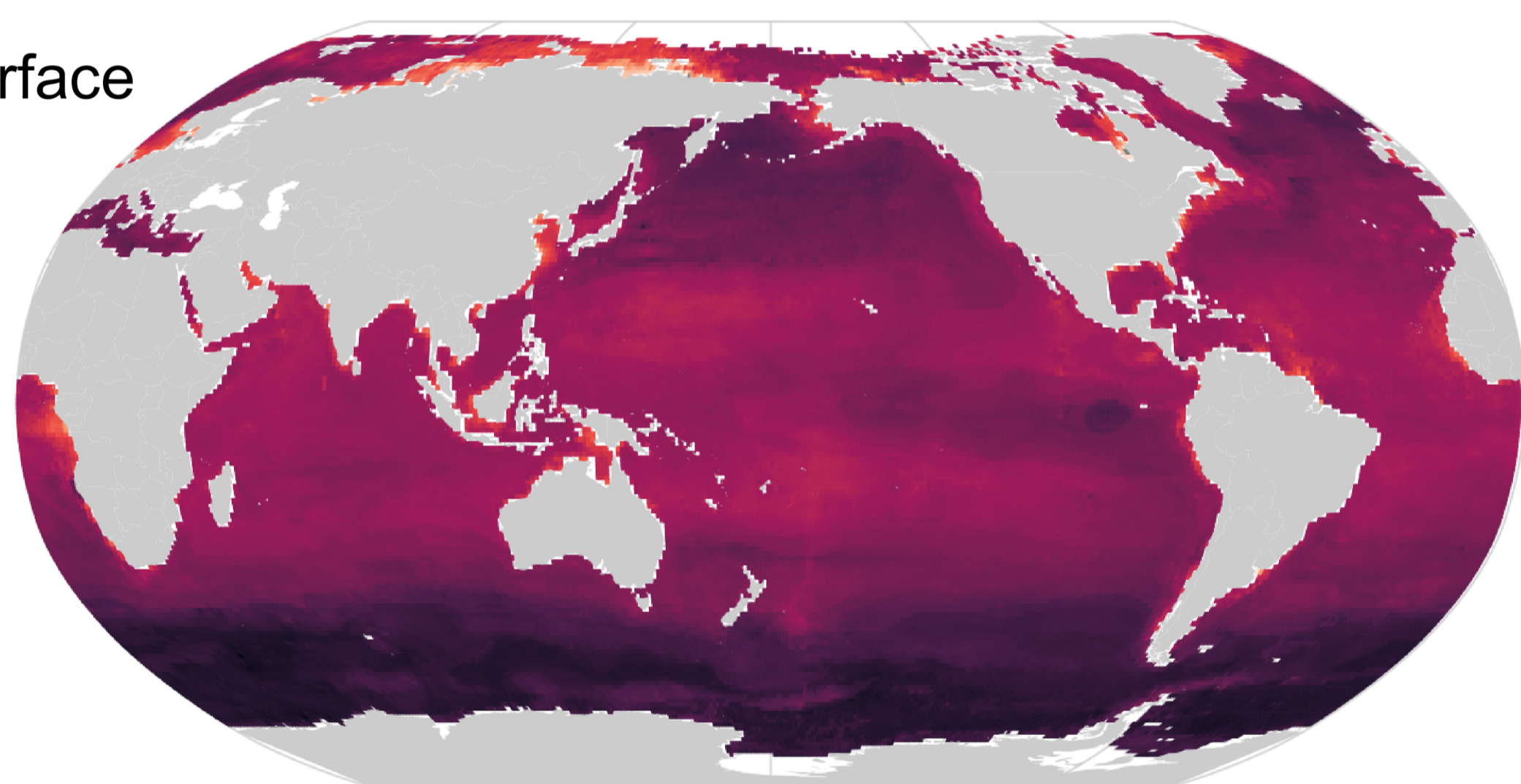
Existing env. climatologies^{2,3,4}
(~ 10-20)



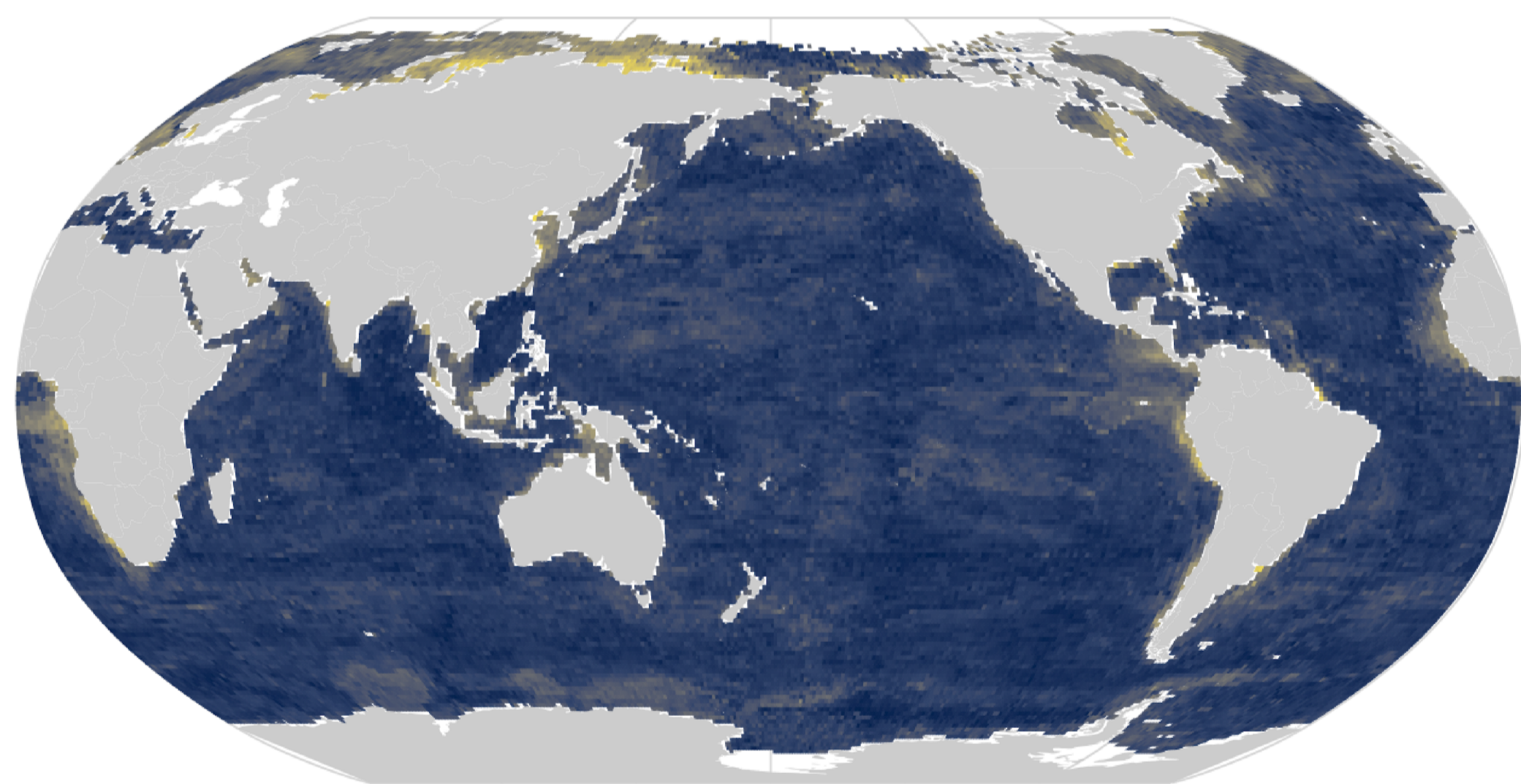
→ 4 layer-wise annual climatologies
→ 4 surface seasonal climatologies

Surface climatology

Surface



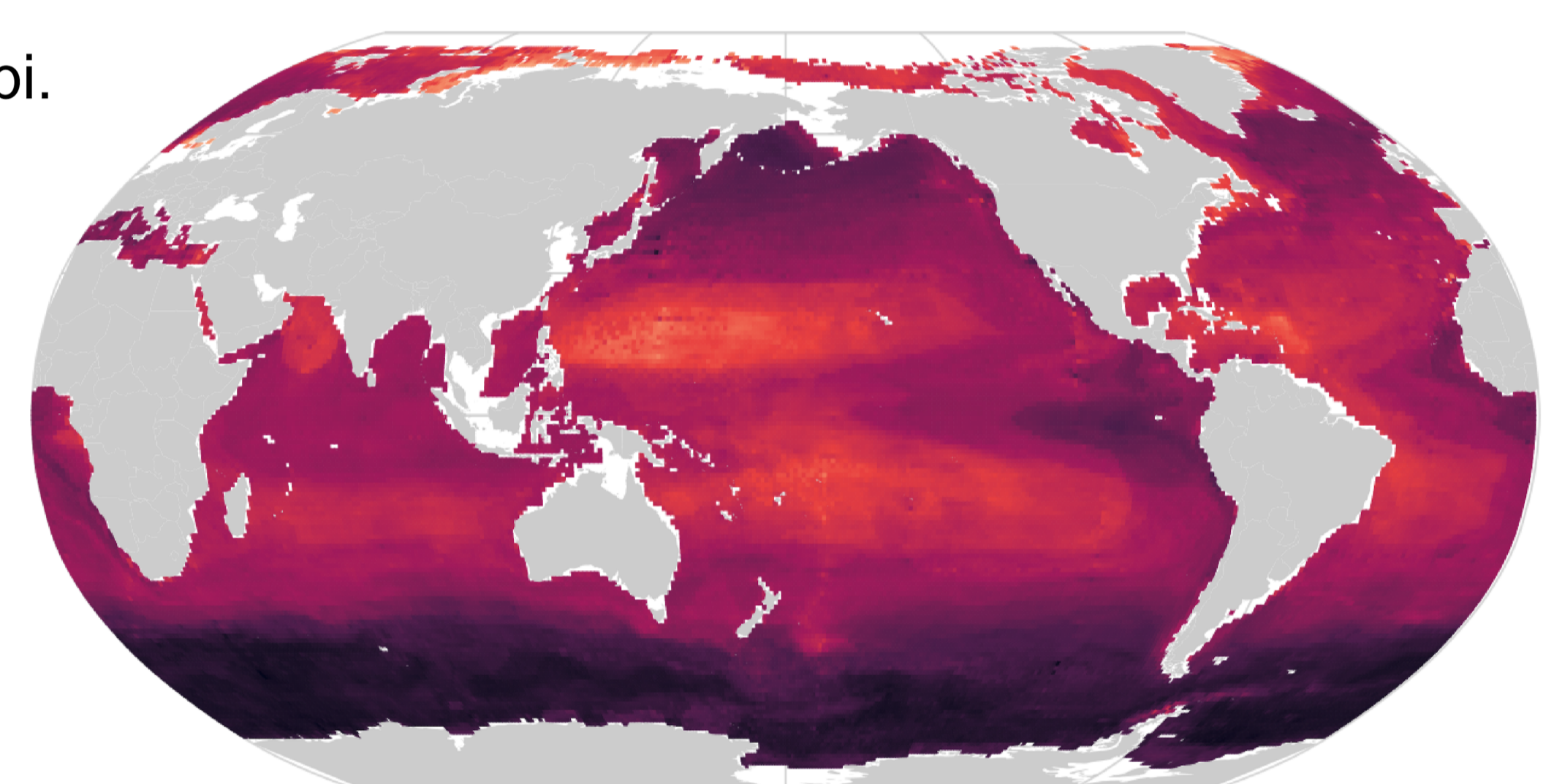
Predicted DOC ($\mu\text{mol kg}^{-1}$) $R^2 = 77.5 \pm 3.3\%$



Prediction uncertainty ($\mu\text{mol kg}^{-1}$)

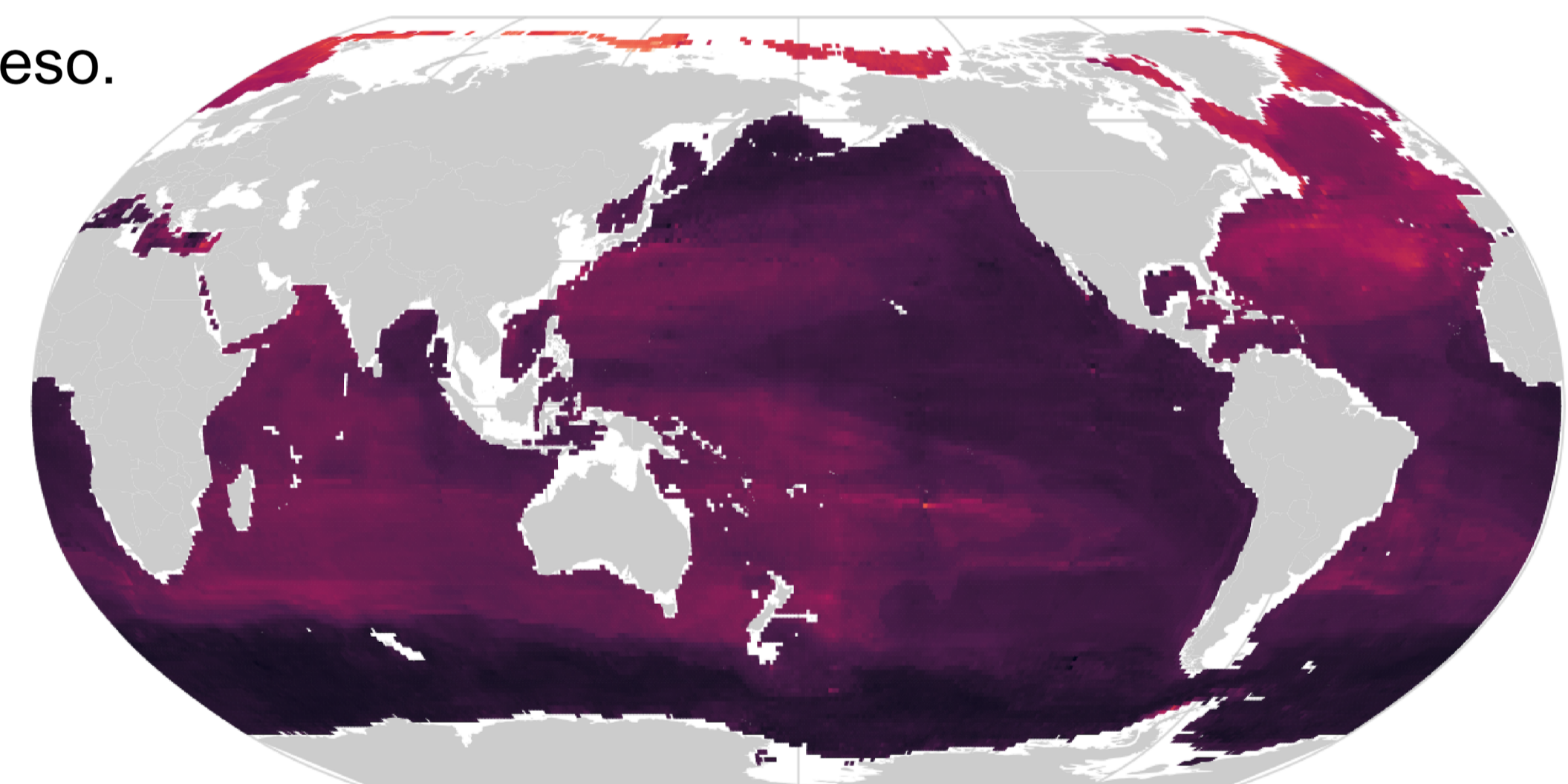
Deeper climatologies

Epi.



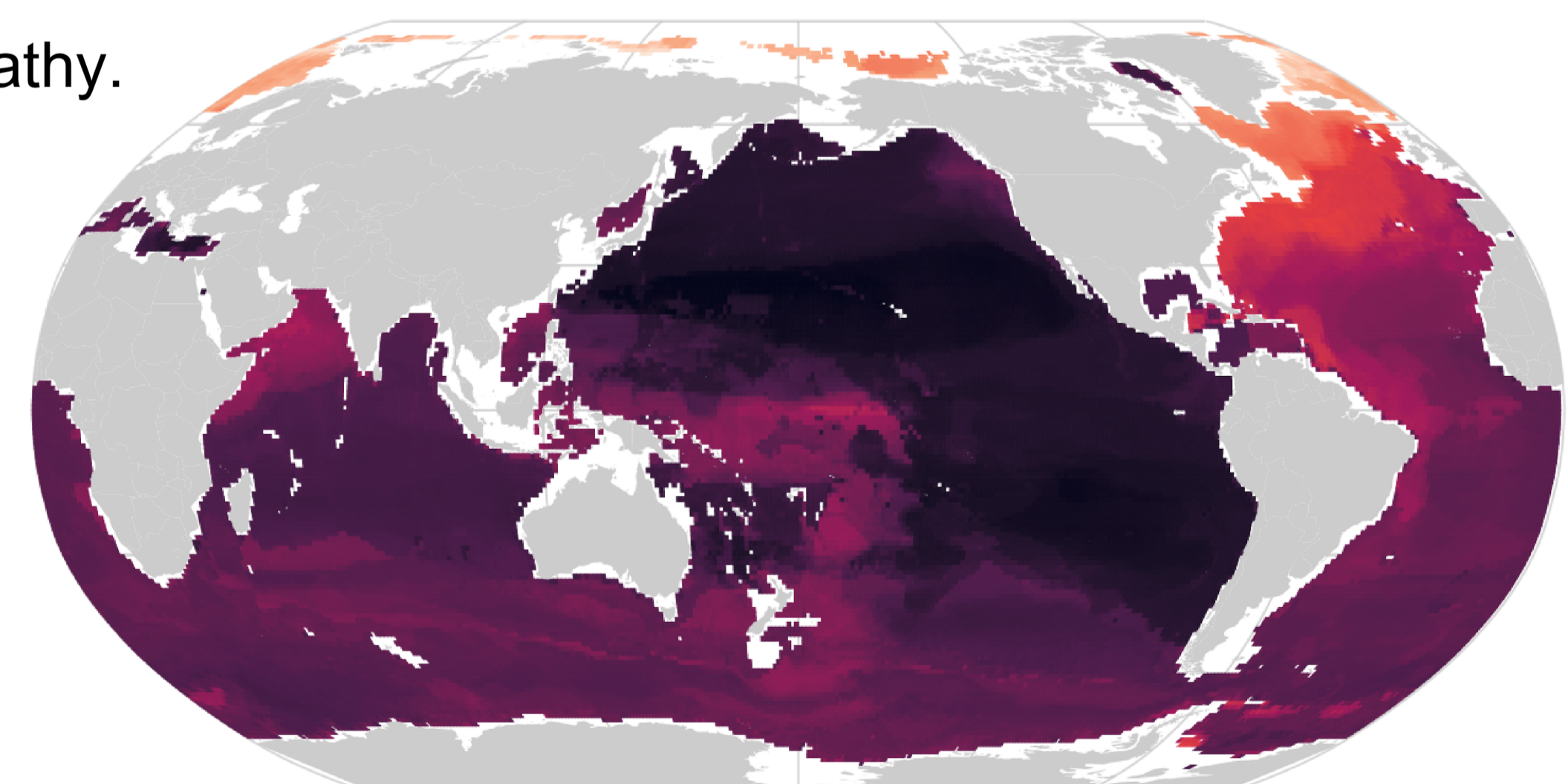
Predicted DOC ($\mu\text{mol kg}^{-1}$) $R^2 = 78.4 \pm 2.2\%$

Meso.



Predicted DOC ($\mu\text{mol kg}^{-1}$) $R^2 = 61.1 \pm 7.1\%$

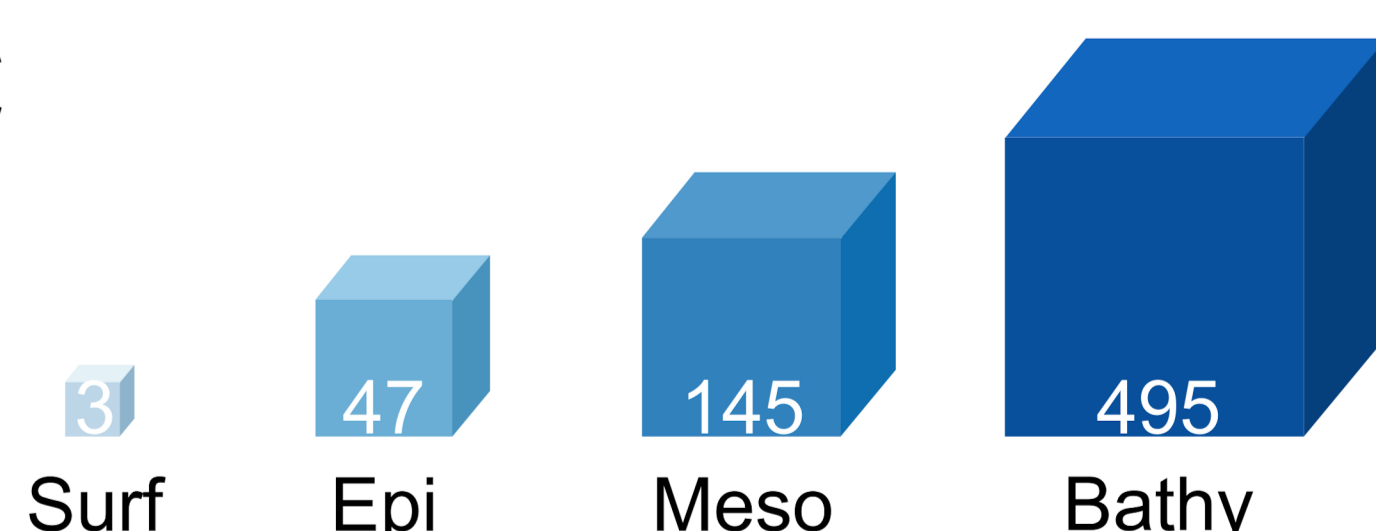
Bathy.



Predicted DOC ($\mu\text{mol kg}^{-1}$) $R^2 = 76.8 \pm 4.4\%$

Total DOC estimate

690 PgC



¹ Hansell, D. A. et al. Compilation of dissolved organic matter (DOM) data obtained from global ocean observations from 1994 to 2021. Version 2 (NCEI Accession 0227166) (2021).

² Garcia, H. et al. World Ocean Atlas 2018, Volume 3: Dissolved Oxygen, Apparent Oxygen Utilization, and Dissolved Oxygen Saturation. NOAA Atlas NESDIS 83 (2019).

³ Key, R. M. et al. Global Ocean Data Analysis Project, Version 2 (GLODAPv2). ORNL/CDIAC-162, NDP-093 http://cdiac.ornl.gov/oceans/GLODAPv2/NDP_093.pdf (2015).

⁴ Lauvset, S. K. et al. A new global interior ocean mapped climatology: the 1° × 1° GLODAP version 2. Earth System Science Data 8, 325–340 (2016).

